

## Protection and Processing of a Highly Hygroscopic Herbal Extract by Drug Layering and Film Coating

### OBJECTIVE

To stabilize a highly hygroscopic herbal extract in a solid dosage form using a drug layering process followed by a moisture barrier film coating.

### INTRODUCTION

The majority of modern herbal extracts are prepared by an alcohol/water extraction method which tends to give them a hygroscopic nature. This can make it difficult for the extract to be processed into a solid dosage form and stabilized under normal storage conditions. This project evaluated the use of a drug layering process and moisture barrier film coating to produce stable active beads for filling into hard gelatin capsules.

Echinacea purpurea (Purple Coneflower) is used widely in the US and Europe as an herbal medicine for its immunostimulant activity. As a result of the European Traditional Herbal Medicines Directive from 2011, all herbs on the European Market must be licensed and meet strict pharmaceutical standards. The use of this technique may make it easier to meet the new stability requirements.

### METHODOLOGY

#### Materials

Echinacea dry pressed juice EFLA<sup>®</sup> 894 (Flachsmann)  
Marker compound b-1,2-D-fructofuranosides > 2.4%(m/m)  
Fumed silica (Aerosil<sup>®</sup> 200, Degussa)  
MCC beads (Ethispheres<sup>®</sup> 600 (600 mm, NP Pharm)  
Nutrafinish<sup>®</sup>, dietary supplement coating (112A290001 Clear)

#### Equipment:

Niro Aeromatic Strea 1 using the bottom spray set up with a 1mm nozzle  
Watson Marlow peristaltic pump.  
Ika RW20.n stirrer. Sartorius 4 digit balance.  
Orion Research Inc. AF8 Titrator. Olympus SZ Microscope.  
Olympus C3030 zoom digital camera.

#### Process

An aqueous suspension of powdered echinacea purpurea extract and silicon dioxide was sprayed onto non-pareil MCC beads to 67% weight gain in a fluid bed processor using a bottom spray module. Silicon dioxide was added to the formulation to reduce the stickiness of the beads during the layering process. A moisture barrier film coating (Nutrafinish 112A290001 Clear) was then applied to a 5% weight gain in the same manner.

## Formulation

The German Commission E Monograph<sup>1</sup> recommends a dose of 6-9 ml of pressed juice, taken from the aerial parts of the plant. This is equivalent to 320 mg of Echinacea purpurea Pressed Juice Extract (EFLA<sup>®</sup>894), the formulations used deliver a dose of 6 ml of pressed juice per daily dose.

**Table 1. Echinacea Purpurea Bead Formulation**

	1Kg Batch	Per 500 mg Capsule*	640.5 g Batch	Per 320 mg Capsule**
Echnacea purpurea	640 g	320 mg	320 g	160.000 mg
Pellet Cores (600 µm)	270 g	135 mg	270g	134.752 mg
Silicon Dioxide	40 g	20 mg	20 g	10.016 mg
Nutrafinish	50 g	5 mg	30.5 g	15.232 mg

\*One capsule per day formulation.

\*\* Two capsules per day formulation.

**Table 2.**

	112A290001
<b>Drug Layering</b>	
Atomizing Air Pressure (bar)	2.5
Inlet Air Temperature (°C)	60-67
Fluid Delivery (g/min)	2.5
Solids Content (%)	58
<b>Film Coating</b>	
Atomizing Air Pressure (bar)	2.0
Inlet Air Temperature (°C)	50
Fluid Delivery (g/min)	3-4
Solids Content (%)	15

## Extract Characterization

Samples of the extract were placed on a glass petri dish and left at room temperature and humidity. Visual observations were made at time 0, 3 and 6 hours. Water absorption by dried extract samples was also evaluated. Samples of high drug loaded beads were placed in clear PVC containers with plastic cap for visual observations after 18 months of storage at room temperature and humidity.

## Stability Study

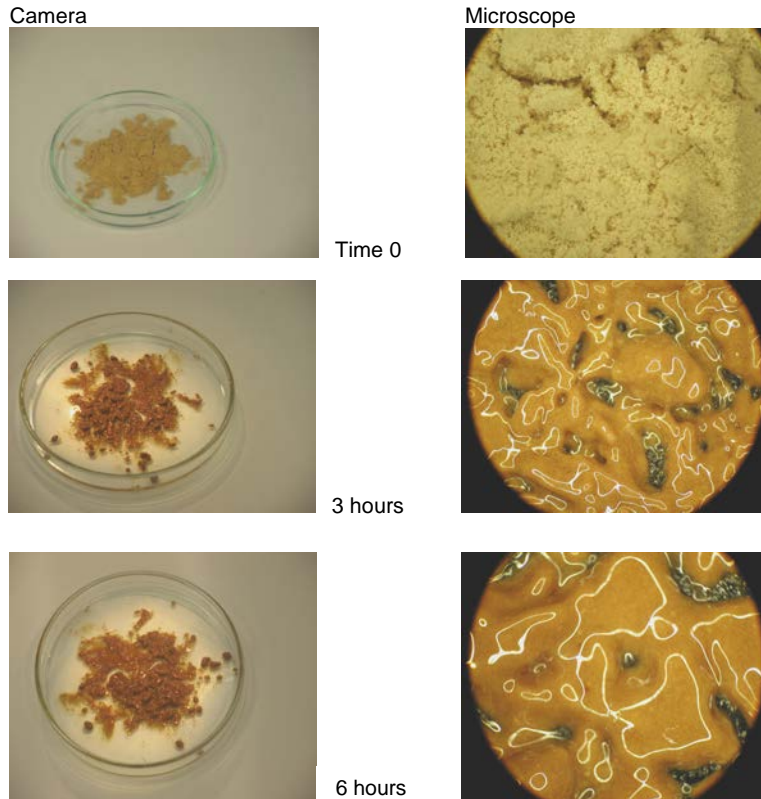
Samples (3 g) of extract powder and the high and low dose beads were dried in an oven for 2 hours at 105°C. Smaller samples (0.1g) of each material were then transferred into a clear glass vial (28 mL) and placed on stability for 7 days at 25°C and 60% RH for a moisture absorption test.

The high drug loaded beads were also filled into hard gelatin capsules with a 500 mg capsule fill weight and packed in heat induction sealed HDPE bottles for stability storage. The weight of filled capsules, moisture content of beads by Karl Fischer, and appearance of capsules/beads were determined through the 18 month time point under ICH storage conditions.

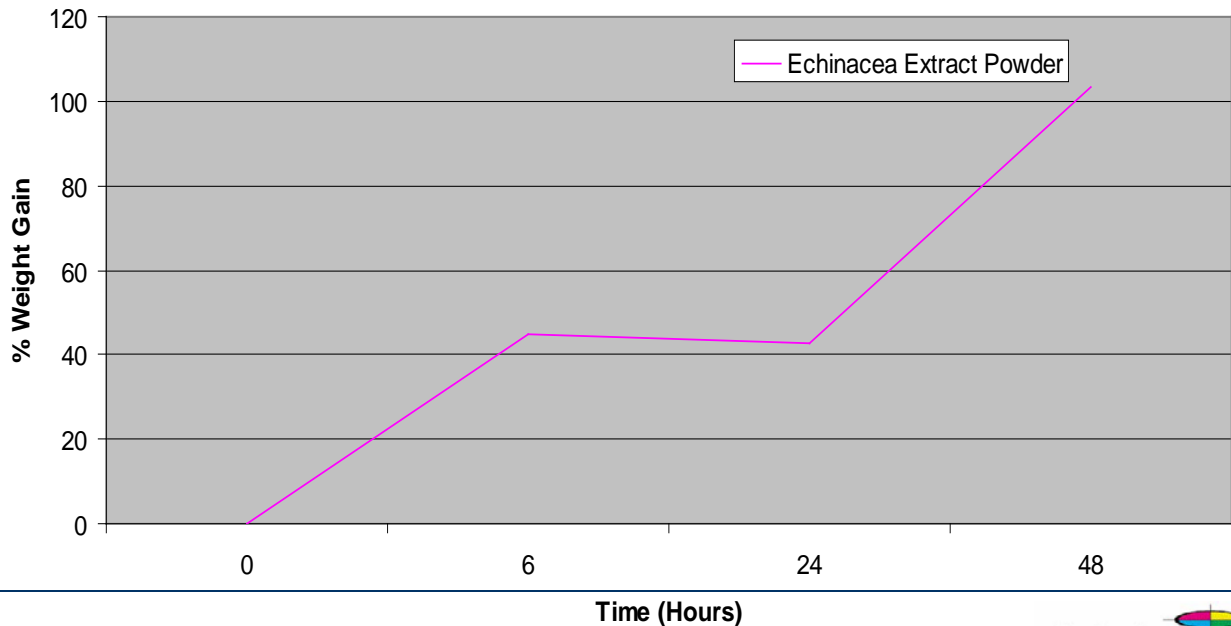
# RESULTS

## Extract Characterization

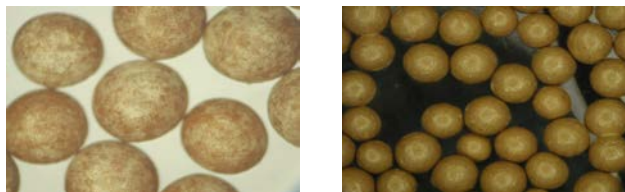
**Figure 1. Visual Observation of Extract Powder at Room Temperature and Humidity, Approximately 20°C and 40-50% RH**



**Figure 2. Weight Gain of 5 g Extract Sample Dried at 90°C for 18 hours, then Stored at 40°C 75% RH for 2 days**

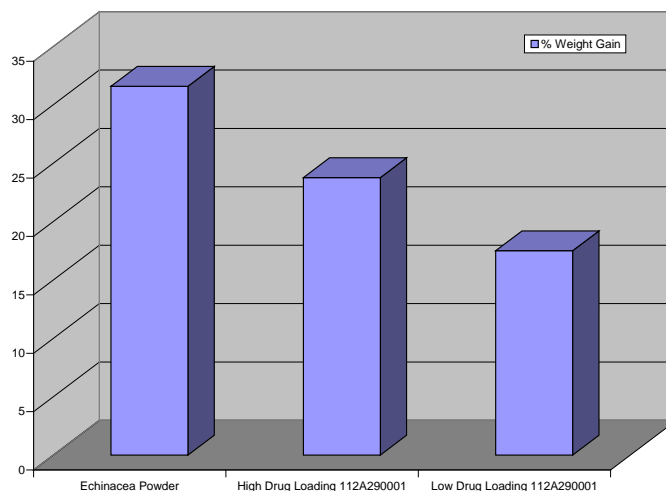


**Figure 3. High Drug Load Formulations: Free Flowing Beads after 18 months in PVC Container at Room Temperature & Humidity**



Nutrafinish Coating Applied to 5% Weight Gain (112A290001 Clear)

**Figure 4. Percentage Weight Gain (Equilibrium Moisture Content)<sup>2</sup> after Dried Samples Stored at 25°C and 60%RH for 7 Days**



The equilibrium moisture content (EMC) was highest for the echinacea powder. EMC increased with increasing loading of echinacea onto the beads.

**Table 3. Karl Fischer Results for Echinacea Bead Capsules Packed in HDPE Bottles**

	112A290001 Initial	112A290001 3M
25°C/60%RH	4.89 +/- 0.12	5.10 +/- 0.99
30°C/65%RH		6.64 +/- 0.58
40°C/75%RH		8.21 +/- 1.02

Average weight gain for 3M stability samples of encapsulated beads in HDPE bottles was less than 1% at all ICH conditions.

## DISCUSSION

Coated *Echinacea purpurea* beads were produced successfully, and they were protected from moisture absorption by the moisture barrier film coatings. After 18 months storage in PVC containers at room

temperature and humidity, the beads coated with either coating system were still free flowing. In contrast, the unprocessed powdered extract liquefied after 3 hours when exposed to the same condition in a glass petri dish. The EMC of the extract powder is 32% at 25°C/60% RH, while the coated high drug-loaded beads have an EMC of 24%. The low drug-loading beads have an EMC of 17.5% for the 112A290001 coating. According to the classification system proposed by Callahan<sup>3</sup>, the extract powder is in Class VI, Very Hygroscopic while the coated beads fall into a lower category Class III, Moderately Hygroscopic. The classification further confirms the significant difference in hygroscopicity characteristic between the powder extract and the film coated beads as well as the bead-in-capsule dosage forms.

## CONCLUSIONS

A stable, solid form of *echinacea purpurea* beads was prepared by layering an aqueous extract onto non-pareil beads followed by an application of a moisture barrier film coating of Nutrafinish. The physical stability of the beads was proven satisfactory for up to 18 months as compared to a few hours of the unprocessed powdered extract. Similar stability was also obtained with beads-in-capsules. This technology can also be applied to other hygroscopic herbal extracts.

## REFERENCES

1. The Complete German Commission E Monographs: Therapeutic Guide to Herbal Medicines. The American Botanical Council. Blumenthal M. et al.
2. Visalakshi, N.A. ; Mariappan, T.T ; Bhutani, H. *Pharm Dev and Tech* **10**. 498-497 2005.
3. Callahan, J.C. et al *Drug Dev Ind Pharm*. **8**. 355-369 1982.

---

The information contained herein, to the best of Colorcon, Inc.'s knowledge is true and accurate. Any recommendations or suggestions of Colorcon, Inc. with regard to the products provided by Colorcon, Inc. are made without warranty, either implied or expressed, because of the variations in methods, conditions and equipment which may be used in commercially processing the products, and no such warranties are made for the suitability of the products for any applications that you may have disclosed. Colorcon, Inc. shall not be liable for loss of profit or for incidental, special or consequential loss or damages.

Colorcon, Inc. makes no warranty, either expressed or implied, that the use of the products provided by Colorcon, Inc., will not infringe any trademark, trade name, copyright, patent or other rights held by any third person or entity when used in the customer's application.

For more information, contact your Colorcon representative or call:

North America +1-215-699-7733	Europe/Middle East/Africa +44 (0)-1322-293000	
Latin America +54-11-5556-7700	India +91-832-6727373	China +86-21-61982300

You can also visit our website at [www.colorcon.com](http://www.colorcon.com)



© Colorcon, 2018. The information contained in this document is proprietary to Colorcon and may not be used or disseminated inappropriately.

All trademarks, except where noted, are property of BPSI Holdings, LLC.

ads\_nutrafinish\_prot\_proc\_v4\_07\_2018