

# Metformin HCl 1000 mg ER – Formulation Approaches to Improve Patient Acceptability

M. Rane, V. Ambudkar, S. Damle, N. Tayade and A. Rajabi-Siahboomi

Colorcon, Inc. Harleysville, PA 19438, USA  
www.colorcon.com

CRS  
Poster Reprint 2019

## Introduction

Metformin HCl extended release formulation is one of the most successful and popular ways to control hyperglycemia through maintaining effective drug plasma concentration over a long period thus reducing frequency of dosing.<sup>1</sup> Extended release (ER) formulation of 1000 mg doses of metformin HCl often have higher tablet weight (1500 mg) which may impact patient compliance. Reducing the weight, and subsequently, the size of such tablets could enhance patient acceptability, increase manufacturing productivity and reduce cost. The purpose of this work was to investigate the feasibility of formulating metformin HCl 1000 mg, using direct compression, with reduced tablet weight and application of an easy swallow film coating to improve swallowing, still achieving desired ER profiles.

## Methods

Metformin HCl (1000 mg) ER hydrophilic matrices were manufactured according to the formulation in Table 1 using direct compression. A directly compressible grade of metformin HCl (Compresso MF 95P, Granules India), was screened through ASTM #18 mesh sieve. Separately, directly compressible grades of other ingredients, METHOCEL™ K100M DC2, METHOCEL™ K4M DC2 and MCC (90 µm), were screened through ASTM #40 sieve. The sieved material was blended for 10 minutes in a double cone blender and then lubricated with magnesium stearate (previously screened through ASTM 60# sieve) for an additional 2 minutes. The final blend was compressed on a single rotary tablet press (Rimek, Mini Press II) fitted with 19 x 9 mm oval standard concave tablet tooling at a target tablet weight of 1290 mg. The matrix tablets were then barrier membrane (BM) coated (Table 1) to 9% theoretical weight gain (WG), using a fully perforated side-vented pan coater (Lab Coat, O'Hara). Coated tablets were sampled at intermediate weight gains and evaluated for their drug release profiles. Final BM coated tablets (9% WG) were top-coated with Opadry® EZ clear at 2% WG (BM + EZ Clear). Process parameters for BM coating and Opadry EZ film coating are shown in Table 2.

## Dissolution testing

Metformin HCl ER tablets were tested using 900 mL phosphate buffer pH 6.8 at 37°C, in a USP I (basket) apparatus at 100 rpm. Drug release was analysed spectrophotometrically at 250 nm. The dissolution test results were compared with USP 40 monograph test #5 specification for compliance.<sup>2</sup>

**Table 1. Composition of Metformin HCl ER Tablets, 1000 mg**

| Ingredients                                   | % w/w  | mg / tablet |
|---|--------|-------------|
| <b>Hydrophilic matrix core tablet</b>         |        |             |
| Metformin HCl, DC grade (Granules)            | 81.60  | 1052.64     |
| METHOCEL™ K100M DC2 (DuPont)                  | 8.28   | 106.81      |
| METHOCEL™ K4M DC2 (DuPont)                    | 4.66   | 60.12       |
| Avicel PH 102, MCC (DuPont)                   | 4.96   | 63.98       |
| Magnesium stearate (Ackros)                   | .50    | 6.45        |
| Core Tablet Weight                            | 100.00 | 1290.00     |
| <b>Barrier membrane (BM) coating</b>          |        |             |
| Surelease E-7-19040 (Colorcon)                | 6.75   | 87.07       |
| Opadry (Colorcon)                             | 2.25   | 29.02       |
| Purified water to make 10% w/w solids content | Q.S.   |             |
| BM coated tablet weight                       | 109.00 | 1406.10     |

Note: ^ 1052 mg of Compresso MF95P was equivalent to 1000 mg of metformin HCl (based on 95% assay).

**Table 2. Barrier Membrane (BM) and Film Coating Process Conditions**

| Process Parameter                      | BM Coating (Surelease + Opadry Pore-former)    | Film Coating (Opadry EZ Clear)                 |
|--|--|--|
| Pan size (inch)                        | 12   | 8.5  |
| Spray equipment                        | 970/& - 1S75, 1.2 mm nozzle, ABC cap (Schlick) | 970/& - 1S75, 0.9 mm nozzle, ABC cap (Schlick) |
| Total dispersion solid content (% w/w) | 10   | 08   |
| Theoretical coating weight gain (%)    | 3 to 9   | 2  |
| Pan charge (kg)                        | 0.7  | 0.3  |
| Pan speed (rpm)                        | 11 – 12  | 10   |
| Inlet air temperature (°C)             | 56 – 59  | 58 – 62  |
| Pattern air pressure (psi)             | 20 – 25  | 18 – 20  |
| Air volume (m3/hr)                     | 125 – 150                                      | 90 – 110                                       |
| Atomizing air pressure (psi)           | 20 – 25  | 18 – 20  |
| Gun to bed distance (cm)               | 8  | 5  |
| Product bed temperature (°C)           | 43 – 45  | 43 – 44  |
| Spray rate (g/min)                     | 5 – 6  | 1 – 2  |

## Results

### Direct compression using Methocel DC2

For a low tablet weight formulation, using the powder form of metformin HCl often requires a wet granulation process.<sup>3</sup> However, in this work, directly compressible grades of metformin HCl and hypromellose (METHOCEL™ K4M DC2 and K100M DC2) were utilized. The lubricated formulation blend showed good powder flow (Table 3) and easily flowed on the rotary tablet press using gravity feeder with very low variation in tablet weight, hardness and thickness (Table 4). Tablet cores of around 1290 mg were achieved without any defects and with suitable mechanical strength for coating. Uncoated core tablets of metformin HCl exhibited an initial burst of drug due to high solubility of the API (Figure 1).

**Table 3. Powder Properties of Metformin HCl Formulation Blend**

| Powder Property          | Lubricated Blend |
|--------------------------|------------------|
| Bulk density, g/ mL      | 0.55             |
| Tapped Density, g/ mL    | 0.69             |
| Compressibility Index, % | 20.37            |
| Hausner Ratio            | 1.25             |
| LOD, %                   | 2.95             |

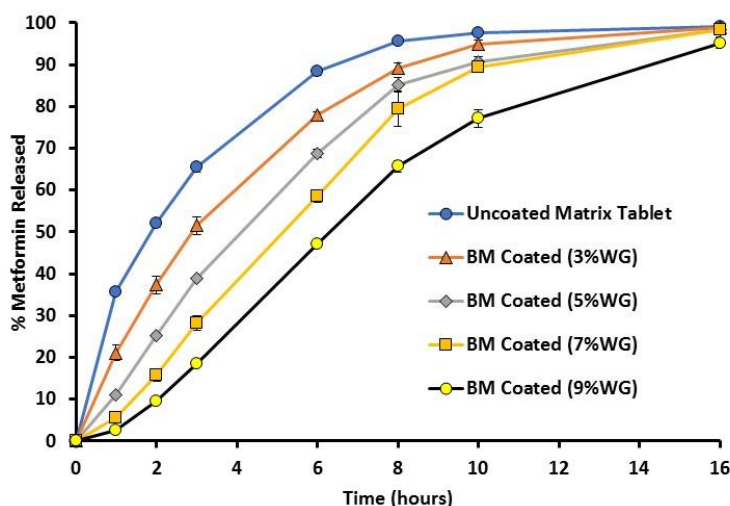
**Table 4. Physical Properties of Uncoated Metformin HCl ER Core Tablets**

| Physical Property            | Metformin HCl ER Core Tablet |
|------------------------------|------------------------------|
| Tablet weight, mg (n = 10)   | 1289.3 ± 2.0                 |
| Hardness, kP (n = 6)         | 17.0 ± 8.8                   |
| Thickness, mm (n=10)         | 9.5 ± 0.0                    |
| Friability at 100 revolution | 0.21%                        |

**Barrier membrane coating using Surelease**

In earlier work<sup>3</sup>, barrier membrane coating of hydrophilic matrix tablets containing highly soluble API successfully resulted in reducing the burst effect. In this study, the matrices were also barrier membrane coated up to 9% WG and inclusion of pore-former at 25% w/w provided flexibility in modulating drug release profile. Higher weight gains ensured uniform coating film thickness, especially at tablet edges. Figure 1 shows dissolution profiles for the matrices, where drug release is slower with increasing weight gain of BM coating. Tablets coated with 9% WG of BM coating complied with USP monograph test # 5 dissolution specification.

**Figure 1. Drug Release Profiles from Uncoated and BM- Coated Metformin HCl Hydrophilic Matrix Tablets**

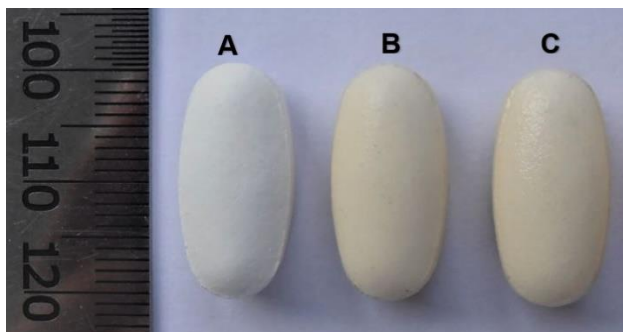


**Easy swallow film coating using Opadry EZ**

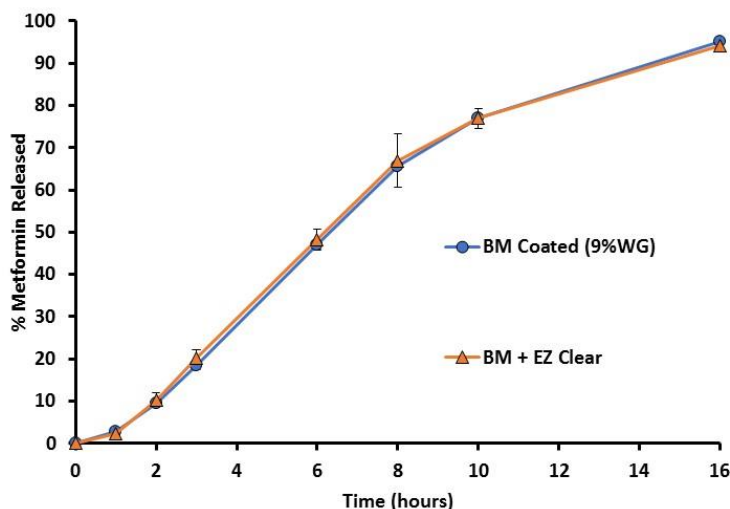
BM coated tablets were top-coated with 2% w/w Opadry EZ clear to improve their wet slip and swallowability. Resulting top-coated tablets did not impact dissolution (Figure 3) and were seen to be

smooth, shiny and free of any defects (Figure 2). The top-coating with Opadry EZ provides high slip when the tablets are wet, helping to ease swallowability of tablets.<sup>4-5</sup>

**Figure 2. Metformin HCl ER Tablets (A) Uncoated core, (B) BM Coat (9% WG), (C) BM Coat + 2% Opadry EZ Clear**



**Figure 3. Dissolution Profiles of BM Coat + Opadry EX Top-coat Metformin HCl ER Tablet**



## Conclusions

The results demonstrate that two major formulation challenges: poor powder flow and burst release of a highly soluble drug from a reduced weight tablet could be addressed by using directly compressible grades of drug and polymer (METHOCEL™ DC2), along with barrier membrane coating. Reducing tablet weight and applying Opadry EZ as top-coat could collectively enhance patient acceptability.

## References

1. Martin L., Rane M., Ambudkar V. and Rajabi-Siahboomi A. Approaches to reduce the weight of extended release tablets: metformin HCl, CRS 2017.
2. USP 40 monograph: metformin hydrochloride extended release tablets.
3. Rane M., Ambudkar V., Martin L., Tayade N., Damle S. and Rajabi-Siahboomi. Application of barrier membrane coating to reduce the weight of metformin HCl extended release tablets, CRS 2018.

4. Czarnocka J., Rajabi-Siahboomi A., To D., Teckoe J. and Batchelor H. The critical attributes of a film coating to make a tablet easy to swallow, AAPS 2018.
5. <https://www.colorcon.com/products-formulation/all-products/film-coatings/immediate-release/opadry-ez> (accessed on 22MAY2019)

---

The information contained herein, to the best of Colorcon, Inc.'s knowledge is true and accurate. Any recommendations or suggestions of Colorcon, Inc. with regard to the products provided by Colorcon, Inc. are made without warranty, either implied or expressed, because of the variations in methods, conditions and equipment which may be used in commercially processing the products, and no such warranties are made for the suitability of the products for any applications that you may have disclosed. Colorcon, Inc. shall not be liable for loss of profit or for incidental, special or consequential loss or damages.

Colorcon, Inc. makes no warranty, either expressed or implied, that the use of the products provided by Colorcon, Inc., will not infringe any trademark, trade name, copyright, patent or other rights held by any third person or entity when used in the customer's application.

For more information, contact your Colorcon representative or call:

|                        |                            |                        |                        |                        |
|------------------------|----------------------------|------------------------|------------------------|------------------------|
| North America          | Europe/Middle East/Africa  | Latin America          | India                  | China                  |
| <b>+1-215-699-7733</b> | <b>+44-(0)-1322-293000</b> | <b>+54-1-5556-7700</b> | <b>+91-832-6727373</b> | <b>+86-21-61982300</b> |

You can also visit our website at [www.colorcon.com](http://www.colorcon.com)



© BPSI Holdings LLC, 2019.

The information contained in this document is proprietary to Colorcon and may not be used or disseminated inappropriately.

All trademarks, except where noted, are property of BPSI Holdings, LLC.

CRS\_2019\_Rane\_MetforminHCI