



## In-vitro Dissolution Testing of Delayed Release Multi-Particulate Systems

Hua Deng, George Reyes, Scott Vass, and Ali R. Rajabi-Siahboomi

### ABSTRACT SUMMARY:

Enteric coated multi-particulate systems may soften and agglomerate on the outer surface when in acidic media, affecting drug release profiles when tested in buffer. In this study the efficacy of fumed silica as an anti-adherent agent on the surface of enteric coated multi-particulates was investigated. Spraying of silicon dioxide dispersion affected discrete multi-particulate units in acid media and resultant consistent dissolution profiles in buffer media.

### INTRODUCTION:

There is a growing interest in the area of multi-particulate (MP) delayed release systems. Aqueous acrylic enteric systems have been extensively studied for coating of MPs<sup>(1)</sup>. Enteric coated dosage forms are tested for their gastro-resistance performance in HCl acid media (pH 1.2) for up to 2 hours prior to being assessed for drug release in a buffer media (phosphate buffer pH 6.8 or above)<sup>(2)</sup>. During the gastro-resistance testing, the enteric membrane on MPs may soften and cause agglomeration of the units. This may lead to slow and variable drug release profiles, when transferred to the buffer media<sup>(3)</sup>. The objective of this study was to investigate the use of fumed silica as an anti-adherent agent to prevent potential agglomeration of multi-particulates in acid media.

### EXPERIMENTAL METHODS:

Fumed silica (CAB-O-SIL® M-5P, Cabot Corporation, USA) and a formulated methacrylic acid co-polymer (Acryl-EZE®, Colorcon, Inc., USA) were used in this study. Chlorpheniramine maleate (CPM) was coated onto 18/20 mesh (850-1000 µm) sugar spheres (Colorcon, Inc.) to a target drug load of 37 mg/g using a Vector fluidized bed coater (FL-M-60 equipped with Wurster column) using Hypromellose 2910 (METHOCEL™ E6 Premium, Dow-Wolff Cellulosics, USA) as a binder. The drug layering was carried out at an inlet temperature of 58-60°C, fluid delivery rate of 118 mL/minute, atomizing air pressure of 20 pounds per square inch (psi) and an air volume of 900 cubic feet per minute (cfm).

The CPM beads were coated with Acryl-EZE® to a 30.0% weight gain (WG) in an Aeromatic Strea-1 (Niro, USA). Fumed silica dispersion (5.0% w/w in water) was then sprayed to the surface of the enteric coated MPs up to a 1.0% WG. In a comparative study, dry fumed silica powder was added to the enteric coated MPs and blended in the Aeromatic Strea-1. The process parameters for the fumed silica applications are shown in Table 1.

Table 1: Parameters- Method of Silica Addition

Parameters	Aqueous Coating	Dry Blending
Nozzle size (mm)	1	-
Charge (g)	750	750
Fluid delivery rate (g/min)	4.0 - 5.0	-
Inlet air temperature (°C)	45	RT*
Exhaust air temperature (°C)	38 - 41	RT*
Atomization air pressure (bar)	1.5	-
Air volume (cfm)	100 - 200	100 - 200
Weight gain (%)	1	1

\* RT: room temperature.

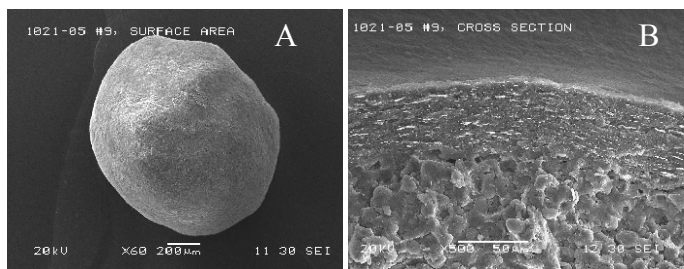
The Acryl-EZE® coated MPs (1.0 g) with or without fumed silica applications, were placed in baskets of a USP, apparatus I dissolution unit (SOTAX, Switzerland) and immersed in acid dissolution media pH 1.2 HCl or pH 4.5 acetate buffer for 2.0 hours. The MPs were then removed and dried at room temperature for at least 48 hours. The surface and cross-sections of the MPs, before and after 2.0 hours in acidic media, were observed using an optical microscope (Miller Optical, USA) or a scanning electron microscope (SEM) (Micron Inc, USA).

The CPM release from the enteric coated beads was evaluated in the USP, apparatus I at 100 rpm, for 2.0 hours in pH 1.2 (1000 ml), followed by 60 minutes in pH 6.8 phosphate buffer (1000 ml). An on-line dual beam spectrophotometer (Perkin-Elmer, USA) was used for the detection of CPM at a wavelength of 262 nm.

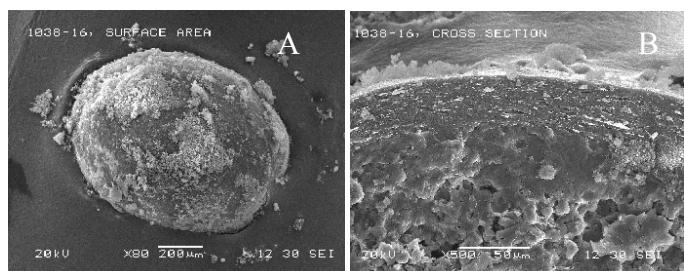
### RESULTS AND DISCUSSION:

The surface and cross-sectional SEM images of the enteric coated MPs with 1.0% WG of fumed silica applied by spraying and dry blending are shown in Figures 1 & 2, respectively. Spraying provided a smooth uniform finish over the entire surface of the pellets. Dry blending resulted in silica agglomeration on the surface and non-uniform surface coverage. Figures 3 & 4 indicate that the application of 1.0% WG of fumed silica (by spraying) provided sufficient anti-adherence to prevent agglomeration of MPs after 2.0 hours in acid media pH 1.2 (HCl) or pH 4.5 (acetate buffer).

**Figure 1: SEM Images of a Pellet with 1.0% WG Fumed Silica by Spraying (A) Surface; (B) Cross-Section.**



**Figure 2: SEM Images of a Pellet with 1.0% WG Fumed Silica by Dry Blending (A) Surface; (B) Cross-Section**



**Figure 3: Optical Microscope Images of Pellets Before (MPs on the Left) and After Exposure to pH 1.2 (MPs on the Right): (A) without Fumed Silica; (B) with 1.0% Fumed Silica Sprayed**



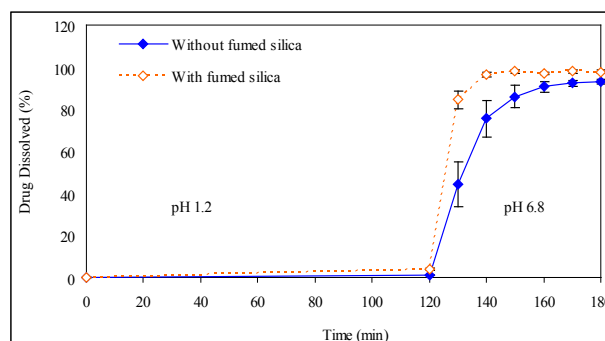
**Figure 4: Optical Microscope Images of Pellets before (MPs on the Left) and After Exposure to pH 4.5 (MPs on the Right): (A) without Fumed Silica; (B) with 1.0% Fumed Silica Sprayed.**



Further studies revealed that fumed silica sprayed on the surface of MPs exhibited good anti-adherence at levels as low as 0.25% WG in pH 1.2 or pH 4.5 buffer. The MPs with 1.0% WG of fumed silica retained their anti-adherence properties after friability stress testing (25 rpm, 2 minutes; Varian, USA) or after 2 weeks open dish 40°C / 75% relative humidity.

Figure 5 shows the dissolution profiles of CPM from Acryl-EZE® enteric coated MPs with and without 1.0% fumed silica application. The results show consistent and immediate release of CPM in pH 6.8 buffer from pellets sprayed with fumed silica (1.0% WG), compared to MPs without fumed silica. This is mainly due to anti-adherence of fumed silica preventing MP agglomeration in the acid media.

**Figure 5: Drug Release Profiles of Acryl-EZE® Coated MPs with and without Top Coat, (n=6).**



## CONCLUSIONS:

Fumed silica adhered and remained to the surface of enteric coated multi-particulates when applied via aqueous dispersion spraying. The use of fumed silica resulted in consistent and immediate release of CPM in buffer, without agglomeration of the multi-particulates in acid media. It is therefore recommended to apply up to 1.0% fumed silica, by spraying to the surface of enteric coated MPs to avoid pellet agglomeration.

## REFERENCES:

1. Rajabi-Siahboomi A.R. & Farrell T.P., In: Aqueous polymeric coatings for pharmaceutical dosage forms, Eds. McGinity J.W. & Feltn L.A. (2008).
2. USP 31-NF26, 2007.
3. Colorcon internal document, 2007.

**World Headquarters**

Colorcon

415 Moyer Blvd., PO. Box 24, West Point, PA 19486-0024

Tel: 215-699-7733 Fax: 215-661-2605 Website: www.colorcon.com

<b>Locations</b>	<b>Telephone</b>	<b>Facsimile</b>	<b>Locations</b>	<b>Telephone</b>	<b>Facsimile</b>
<i>United States</i>			<i>Asia/Pacific</i>		
Santa Ana, California	714-549-0631	714-549-4921	Singapore	65-6438-0318	65-6438-0178
Indianapolis, Indiana	317-545-6211	317-545-6218	Fuji-gun, Shizuoka, Japan	81-5-4465-2711	81-5-4465-2730
Humacao, Puerto Rico	787-852-3815	787-852-0030	Shanghai, China	86-21-5442-2222	86-21-5442-2229
Stoughton, Wisconsin	608-887-8970	608-887-8984	Goa, India	91-832-288-3434	91-832-288-3440
<i>Canada</i>			Gyeonggi-do, Korea	82-31-296-2173	82-31-296-2178
St. Laurent, QC, Canada	514-337-8341	514-337-9159	<i>Latin America</i>		
<i>Europe</i>			Buenos Aires, Argentina	54-11-4552-1565	54-11-4552-3997
Dartford, Kent, England	44-1322-293000	44-1322-627200	Cotia, Brasil	55-11-4612-4262	55-11-4612-3307
Massy, France	33-1-6447-9750	33-1-6932-5983	Bogota, Colombia	571-418-1202	571-418-1257
Idstein, Germany	49-6126-9961-0	49-6126-9961-11	Caracas, Venezuela	58-212-237-9842	58-212-238-2259
Gallarate, Italy	39-0331-776932	39-0331-776831	Mexico DF, Mexico	52-55-3000-5700	52-55-3000-5701 /02
Budapest, Hungary	36-1-200-8000	36-1-200-8010			
Istanbul, Turkey	90-216-465-0360	90-216-465-0361			
Barcelona, Spain	34-9-3589-3756	34-9-3589-3792			

The information contained herein, to the best of our knowledge is true and accurate. Any recommendations or suggestions are made without warranty or guarantee, since the conditions of use are beyond our control. Any information contained herein is intended as a recommendation for use of our products so as not to infringe on any patent.

Copyright © 2008 Colorcon. The information contained in this document is proprietary to Colorcon and may not be used or disseminated inappropriately.

All trademarks, except where noted, are property of BPSI Holdings, LLC.  
mr\_crs\_2008\_multi\_hdeng\_0708\_ver1

First published 07.2008